



The World's Most  
**LUXURIOUS HOTEL**





BURJ AL ARAB®

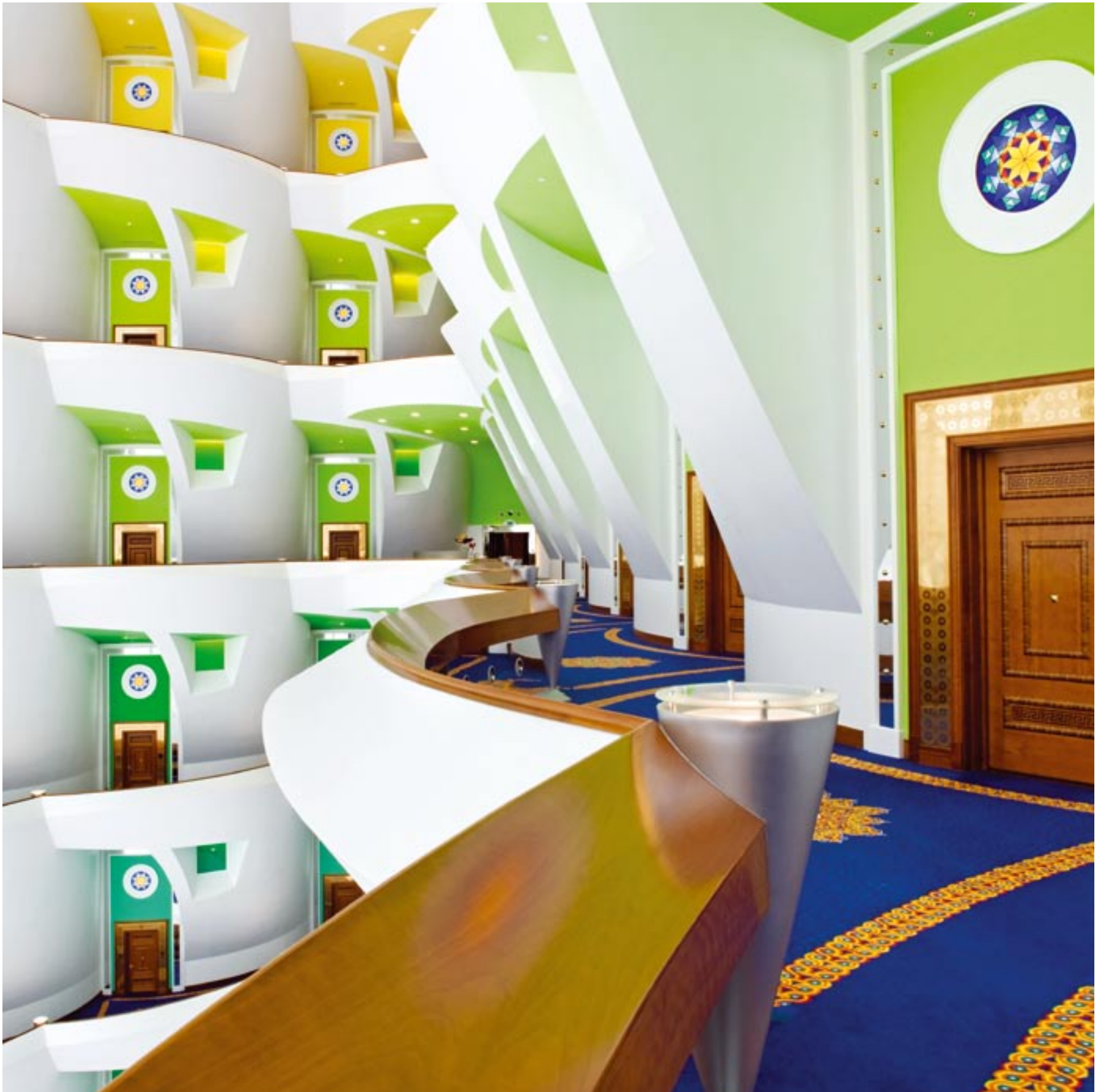
Jumeirah





Rising from the Arabian Gulf on an island 280 metres from the shores of the renowned Jumeirah beach and designed to resemble the graceful sails of an Arabian dhow, Burj Al Arab soars to a height of 321 metres, dominating Dubai's coastline.

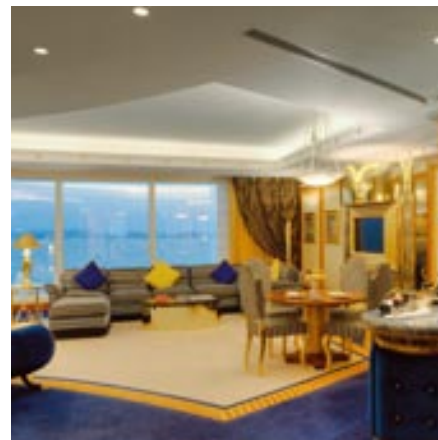
Burj Al Arab has long been recognised as one of the finest hotels in the world and offers the ultimate in luxury accommodation. The respect for privacy and the warmth and cordiality of Burj Al Arab colleagues blends with legendary service, guaranteeing the guest an unforgettable stay.





## QUINTESSENTIAL STYLE AND SOPHISTICATION

Burj Al Arab's architecturally innovative exterior and truly exuberant interior come together to create the breathtaking entirety. Offering unparalleled standards of comfort and service, the exclusive all-suite hotel truly reflects the finest that the world has to offer.



Towering 27 double-height storeys high, Burj Al Arab comprises of a choice of One, Two and Three Bedroom Deluxe Suites; Panoramic and Club Suites; the Presidential Suites and the two Royal Suites that extend over the 25th floor.

Suites vary in size and features, from 170sqm (1830sqf) to 780sqm (8396sqf), whilst incorporating unsurpassed attention to detail and unmatched opulence.



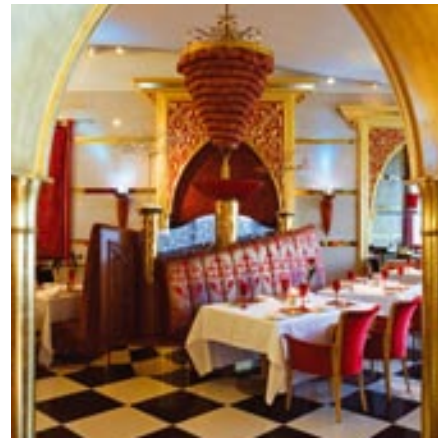




## DINING

### AL MAHARA

Renowned for the finest seafood from the ocean, guests are transported to Dubai's most unique restaurant by a simulated submarine ride to discover a magical aquarium environment.



### AL MUNTAHA

Poised 200 meters above sea level, Al Muntaha, as the name suggests, offers 'the ultimate' in contemporary European cuisine.

### AL IWAN

Fine food is prepared with quality ingredients, drawing together classic cooking techniques with the very finest seasonal food for a real taste of Arabia.



### JUNSUI

The Japanese word for 'pure', Junsui is a new, authentic Far East Asian restaurant with a culinary team comprising Asian chefs preparing a wide selection from twelve live stations in open kitchen concept. Japanese and Chinese cuisine will be well presented and completed with Thai, Indonesian and Korean dishes.





## DINING

### SKYVIEW BAR

Known for its sophistication and amazing vistas, Skyview Bar offers the finest selection of rare spirits and fine wines, served by friendly and knowledgeable bartenders.

### SAHN EDDAR

The distinctively stylish setting at the base of the world's tallest atrium provides the perfect backdrop to enjoy morning coffee or afternoon tea.

### MAJLIS AL BAHAR

Set alongside kilometres of beautiful beach, Majlis Al Bahar serves a variety of dishes from a diverse menu. After sunset the restaurant evolves into a relaxed venue, offering warm, genuine hospitality.

### BAB AL YAM

Located amidst lush landscaped gardens and alongside Burj Al Arab's private sundeck, this café-style restaurant offers a varied international buffet.







## BANQUETING

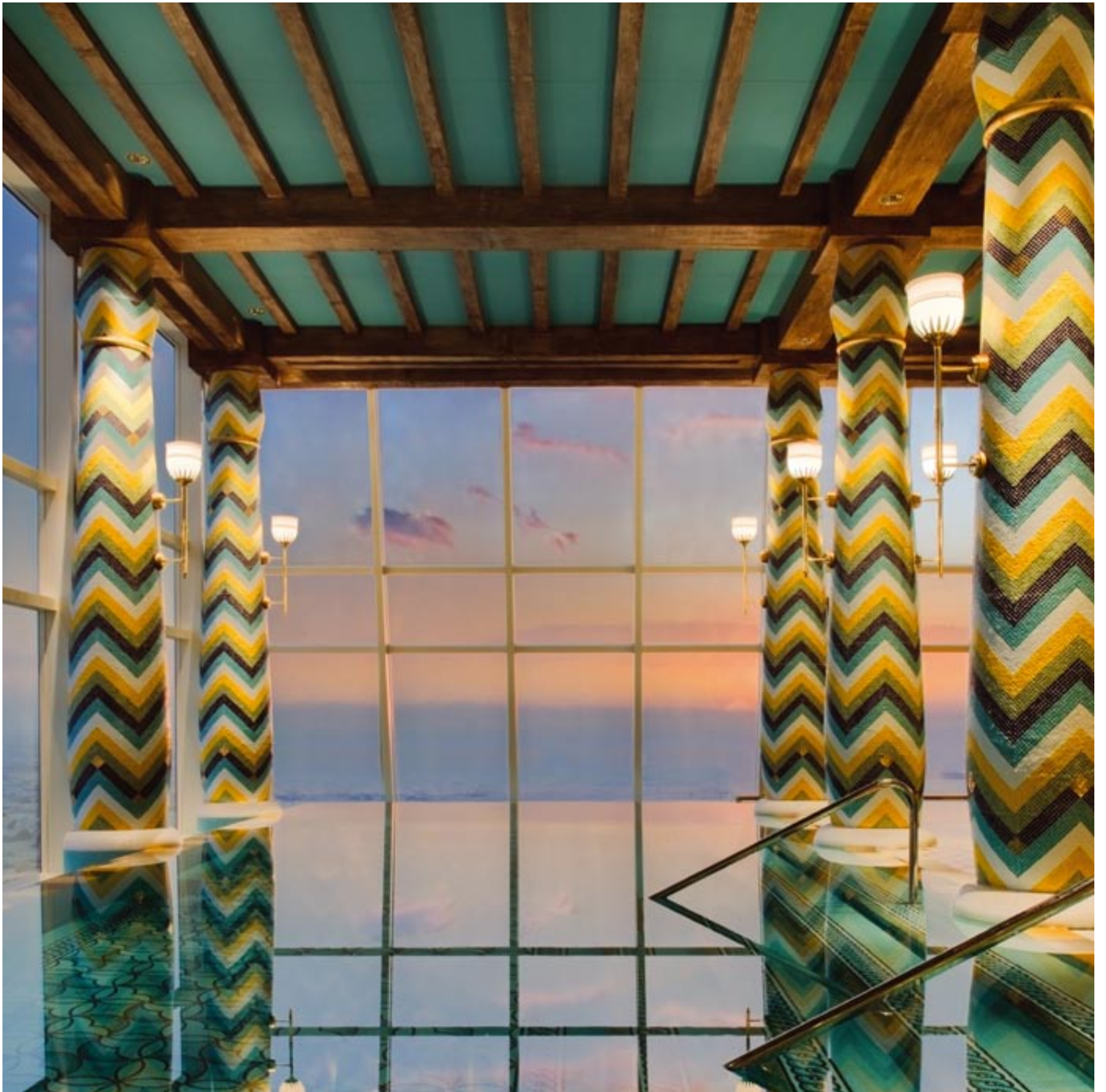
The lavishly appointed banqueting venues and ballroom at Burj Al Arab have played host to many prestigious gala dinners, banquets and business seminars.



With its commanding panoramas, the two-tiered Al Falak Ballroom is a first class performance location, whilst the Marina Garden and the unique Assawan Amphitheatre offer equally attractive venues.

Burj Al Arab's wide selection of distinctive business rooms on the 27th floor offers an elegant setting for hosting a large conference or small seminar, entertaining business associates or for upscale private events.







## LEISURE

Burj Al Arab Spa offers a unique nature-based luxury spa to help you unwind, with products and treatments from world-renowned houses such as La Prairie. The spa encompasses a fitness centre and both the men's and women's relaxation areas feature an aqua retreat. In addition, a healthy menu of nourishing cuisine can be enjoyed in the relaxed setting of the Assawan Amphitheatre.

Set amongst lush gardens, the picturesque pool and sundeck promenade overlooks the Burj Al Arab's private stretch of beach, providing a serene outdoor setting. From world-class shopping destinations to breathtaking legendary golf courses; from the warm Arabian Gulf to the captivating desert landscapes, the Burj Al Arab offers uniquely tailored experiences.

Our Ultimate Leisure packages will offer guests luxury chartered yacht cruises; chauffeured personal shopping experiences; scenic helicopter tours or glamorous sports cars to drive for a day.



Jumeirah  
STAY DIFFERENT™

## JUMEIRAH REGIONAL SALES OFFICES

### UK & IRELAND

83 Victoria Street  
London SW1H 0HW, United Kingdom  
Tel: +44 20 3008 8120, Fax: +44 20 3008 8121  
Email: uksales@jumeirah.com

### GERMANY, SWITZERLAND,

### AUSTRIA & SCANDINAVIA

Hauptstrasse 96a, 65843 Sulzbach, Germany  
Tel: +49 6196 652 0390, Fax: +49 6196 574 881  
Email: germanysales@jumeirah.com

### RUSSIA

c/o Emirates, Paveletskaya sq., 2, Block 3,  
5th floor, Moscow, Russia 115054  
Tel: +7 495 514 16 40, Fax: +7 495 514 16 41  
Email: moscowsales@jumeirah.com

### USA

1350 Avenue of the Americas, 6th Floor,  
New York, NY 10019, USA  
Tel: +1 212 237 2640, Fax: +1 212 484 4524  
Email: americassales@jumeirah.com

### JAPAN

1-4-3-1101, Azabu-dai, Minato-ku, Tokyo 106-0041  
Tel: +81 3 3486 8327, Fax: +81 3 3486 8327  
Email: japansales@jumeirah.com

### NORTH ASIA

Suite 302 – 303, Wong Hing Bldg,  
74 – 78 Stanley Street, Central, Hong Kong SAR  
Tel: +852 2537 7610, Fax: +852 2815 5651  
Email: nthasiasales@jumeirah.com

### SOUTH EAST ASIA

Third Floor, 11/14 Soi Ruam Rudee, Wireless Road,  
Lumpini, Pathumwan, Bangkok 10330, Thailand  
Tel: +66 2 689 6318, Fax: +66 2 689 6319  
Email: seasiassales@jumeirah.com

### FRANCE, ITALY, SPAIN & BENELUX

27 Avenue de l'Opera, Paris, France 75001  
Tel: +33 1 70 38 51 17, Fax: +33 1 70 38 54 02  
Email: francesales@jumeirah.com

### GULF REGION

Academic City Road, P.O.Box 214159, Dubai, UAE  
Tel: +971 4 364 7777, Fax: +971 4 364 7701  
Email: sales@jumeirah.com

### WEBSITE:

**jumeirah.com**

Fax: +971 4 314 3666  
Email: reservations@jumeirah.com

Travel agent helpdesk:  
Email: JThelp@jumeirah.com

### TOLL FREE FROM:

United Arab Emirates	800 JUMEIRAH (800 58634724)
Bahrain	800 555
Germany	0800 182 8000
Kingdom of Saudi Arabia	800 897 1439
United Kingdom	0800 082 8000
United States of America	+1 877 854 8051

### DIRECT DIAL: (IDD RATES APPLY)

Kuwait	+971 4 314 3640
Qatar	+971 4 314 3650
Other countries	+971 4 364 7555

### THE GDS CHAIN CODE FOR JUMEIRAH IS JT

Amadeus	JTDXB208
Worldspan	JT6208
Sabre	JT49282
Galileo	JT21235



BURJ AL ARAB®

Jumeirah

PO Box 74147, Dubai, UAE

Tel: +971 4 301 7777, Fax: +971 4 301 7000

Email: [BAInfo@jumeirah.com](mailto:BAInfo@jumeirah.com)

[jumeirah.com](http://jumeirah.com)