




TAJ
DUBAI

DUBAI

TAKING PRIME POSITION OVERSEEING THE PRESTIGIOUS DOWNTOWN AND BURJ KHALIFA PRECINCT, TAJ DUBAI PUTS YOU AT THE HEART OF WHERE IT HAPPENS: A FIVE MINUTE STROLL FROM THE CITY'S DYNAMIC BUSINESS CENTRE AND A MYRIAD OF EXCLUSIVE SHOPPING AND FINE DINING EXPERIENCES.

An inspiring blend of sophisticated luxury, authentic Indian heritage and contemporary style – Taj Dubai is a world-class destination. We are right by the Burj Khalifa – so from our luxurious suites you get to enjoy awe-inspiring views of the world's tallest building and its magical dancing fountain. And you are only a short walk away from the Dubai Mall, a fashionista's paradise boasting over 1,200 stores and trendsetting venues.





LOBBY

WITH HIGH CEILINGS AND WHITE PANELLED WALLS ACCENTED BY MIRRORS AND POLISHED BRASS, THE WELCOMING LOBBY HAS AN ELEGANT STYLE REMINISCENT OF THE COLONIAL AGE.

The hotel lobby blends contemporary design with vibrant touches of India, with a dramatic, backlit sandstone 'jali' screen set behind the reception, drawing your eye from the moment you arrive. The polished marble floor is overlaid with a plush, hand-tufted carpet, and the soft furnishings blend iridescent silks in lilac, teal and dusky gold with materials inspired by traditional embroidery. This striking space is completed by the contemporary crystal chandelier – designed to evoke birds in flight.

ACCOMMODATION

CONTEMPORARY SOPHISTICATION IS WOVEN INTO ALL 296 ROOMS – FROM OUR GUEST ROOMS TO OUR LUXURY, MAHARAJA AND PRESIDENTIAL SUITES. WHERE TRADITIONAL INFLUENCES INCLUDING HAND-MADE FURNITURE AND HAND-PAINTED INDIAN ARTWORKS ARE GIVEN A COOL, VIBRANT TWIST TO CREATE A UNIQUELY ‘TAJ’ PERSONALITY.

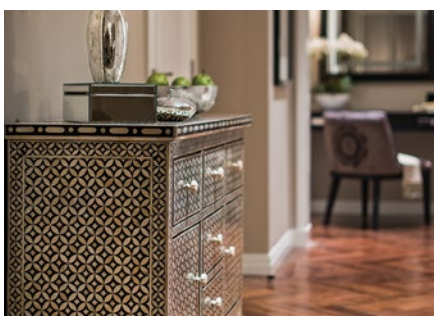
Each room captures the comfortable feel of a personal city residence, with thoughtful touches including welcome gifts, complimentary toiletries and a fully-stocked mini bar. Taj Club Rooms, Luxury Burj View and Grand Luxury Suites are located on the higher floors. Here, you can relax in the expansive open-plan space, lavish bedroom and bathroom areas, amid breathtaking views of Burj Khalifa and Downtown Dubai. The jewels in Taj Dubai’s crown are the Maharaja and Presidential Suites, each with its own separate living and kitchen areas.

GUEST ROOMS (LUXURY, LUXURY BURJ VIEW AND LUXURY FAMILY ROOMS)

- **Occupancy:** 2 adults and 2 children below 12 years of age
- **Size:** 45m² to 58m²
- **View from room:** Burj Khalifa, Business Bay and Downtown Dubai (depending on location and availability at time of booking)
- **Amenities:** Guest Rooms are warm, contemporary and well-appointed with floor to ceiling views of the city. Ideal for business and leisure, the room features a king/twin size bed, a 42” LED TV, in-room safe, tea & coffee facilities. The elegance extends into the en-suite bathroom with double sinks and bathtub, hairdryer and luxurious Molten Brown toiletries. Guests benefit from complimentary Wi-Fi, in-room bottled water, complimentary newspaper and daily turn down service. Additionally Luxury Family Rooms are equipped with sofa-beds.

TAJ CLUB ROOMS

- **Occupancy:** 2 adults and 2 children below 12 years of age
- **Size:** 45m²
- **View from room:** Burj Khalifa
- **Amenities:** Taj Club Rooms offer stunning vistas of the world famous Burj Khalifa. The rooms offer Butler service, access to the exclusive Taj Club Lounge on the 24th floor that serves breakfast in the morning through to evening cocktails, private Taj Club boardroom for meetings. Taj Club Rooms are 45m² featuring a king/twin bed, a 42” LED TV, in room safe, tea & coffee facilities, en-suite bathroom with double sinks and bathtub, hairdryer and luxurious Molton Brown toiletries. Guests benefit from complimentary Wi-Fi, in-room bottled water, complimentary newspaper and turn down service additionally.
- **Additional Amenities:** Taj Club Lounge access and Butler service



JUNIOR SUITES

- **Occupancy:** 2 adults and 2 children below 12 years of age
- **Size:** 65m² to 82m²
- **View from room:** Burj Khalifa, Business Bay and Downtown Dubai (depending on location and availability at time of booking)
- **Amenities:** Offering all the benefits of a Taj Club Room, Junior Suites are more spacious and additionally feature sofa-beds which also make them great family choices.
- **Additional Amenities:** Taj Club Lounge access and Butler service

MAHARAJA SUITE

- **Occupancy:** 2 adults and 2 children below 12 years of age
- **Size:** 225m²
- **View from room:** Burj Khalifa and Business Bay
- **Amenities:** The Maharaja Suite is reminiscent of palatial India from the times of the royals and maharajas. Decorated with traditional Indian motifs and handicrafts, this highly individual suite is located on the 33rd floor with stunning views of the equally regal Burj Khalifa. The suite offers a gracious living room, large private outdoor terrace, master bedroom with attached bathroom and dressing area, dining room with pantry and all the benefits of the Taj Club Lounge.
- **Additional Amenities:** Taj Club Lounge access and Butler service

LUXURY BURJ VIEW SUITES AND GRAND LUXURY SUITES

- **Occupancy:** 2 adults and 2 children below 12 years of age
- **Size:** 115m² to 155m²
- **View from room:** Burj Khalifa and Business Bay (depending on location and availability at time of booking)
- **Amenities:** These suites with magnificent views of Burj Khalifa offer individually appointed spacious suites with king size beds, separate living room, dining room, bar areas and a fully equipped kitchen or pantry. Living rooms offer a media hub connected to the flat screen LED TV. The suites offer full access to all the benefits of the Taj Club Lounge.
- **Additional Amenities:** Taj Club Lounge access and Butler service

PRESIDENTIAL SUITE

- **Occupancy:** 2 adults and 2 children below 12 years of age
- **Size:** 680m²
- **View from room:** Burj Khalifa and Business Bay
- **Amenities:** Presidential Suite is the crowning glory of Taj Dubai designed in a breath-taking contemporary style occupying the entire 35th floor, with its 360 degree view of the world renowned Burj Khalifa, sweeping views of the Dubai skyline and the local precinct. This 680m² suite has a master bedroom with attached bathroom and dressing room, twin-bedded guest room with sitting area, large living room, dining room with pantry, dedicated majlis and office space, private yoga studio and gymnasium.
- **Additional Amenities:** Taj Club Lounge access and Butler service





FOOD & BEVERAGE

WE'VE DESIGNED OUR RESTAURANTS, LOUNGES AND BARS TO BE A FEAST FOR ALL THE SENSES. EACH ONE IS A UNIQUE CONCEPT, INSPIRED BY A MIX OF COUNTRIES AND CULTURES – OFFERING MODERN TWISTS ON TRADITIONAL DISHES, ALL EXQUISITELY PREPARED FROM THE HIGHEST QUALITY INGREDIENTS.

BYZANTIUM LOUNGE

The Byzantium Lounge is set just above the lobby and features plush, upholstered chairs, original artworks and smooth lacquer screens. While away an afternoon with a wide selection of refreshments, or treat yourself to a refined high tea. This rich setting boasts striking visual touches that include a bar featuring art deco-style gold and black peacock lacquer panels.

- **Location:** Mezzanine floor
- **Cuisine:** Sandwiches, salads, coffee, tea, afternoon tea, cocktails and snacks after 5pm
- **Timing:** Daily 7am till late
- **Dress code:** Casual

THE ELOQUENT ELEPHANT

Soak up the relaxed atmosphere of this friendly neighbourhood gastro pub. Take in the unique design features, such as lights inspired by jars and vessels used in wine making, and vintage style decorations made from repurposed wooden drinks crates. Aged timber flooring contrast against chic black and brass accents, with interlocking geometric tiling by the bar adding to the heritage look. Sample drinks from the traditional bar counter and taste refined pub fare served stylishly.

- **Location:** Ground floor
- **Cuisine:** Fusion
- **Timing:** Sunday to Thursday 12 noon till late
Friday to Saturday 11am till late
- **Dress code:** Casual





TESORO

Dine in style in this striking Peruvian restaurant housed within an eye-catching glass and metal conservatory. Sit back in the dappled shade of large olive trees and savour a buffet style breakfast, followed by à la carte Peruvian inspired dishes for lunch and dinner. With its sunken, landscaped garden lounge and contemporary furniture, Tesoro has a fresh, modern feel. Choose to sit on the terrace to enjoy views of Burj Khalifa and Downtown Dubai.

- **Location:** 3rd floor
- **Cuisine:** International with Peruvian influences
- **Timing:** Daily 7am till 11pm
- **Dress code:** Casual at breakfast
Smart casual at lunch and dinner

BOMBAY BRASSERIE

Enjoy the sizzling sights and sounds of an open kitchen serving fine Indian cuisine, where guests can watch their food prepared in the tandoor oven or 'sigri' grill. The vibrant atmosphere is complemented by the cosy, low level seating in an eclectic mix of styles, alongside bold, oversized artworks on the walls. A feature timber screen flows through the restaurant to create more secluded dining areas, and the restaurant has views towards Burj Khalifa.

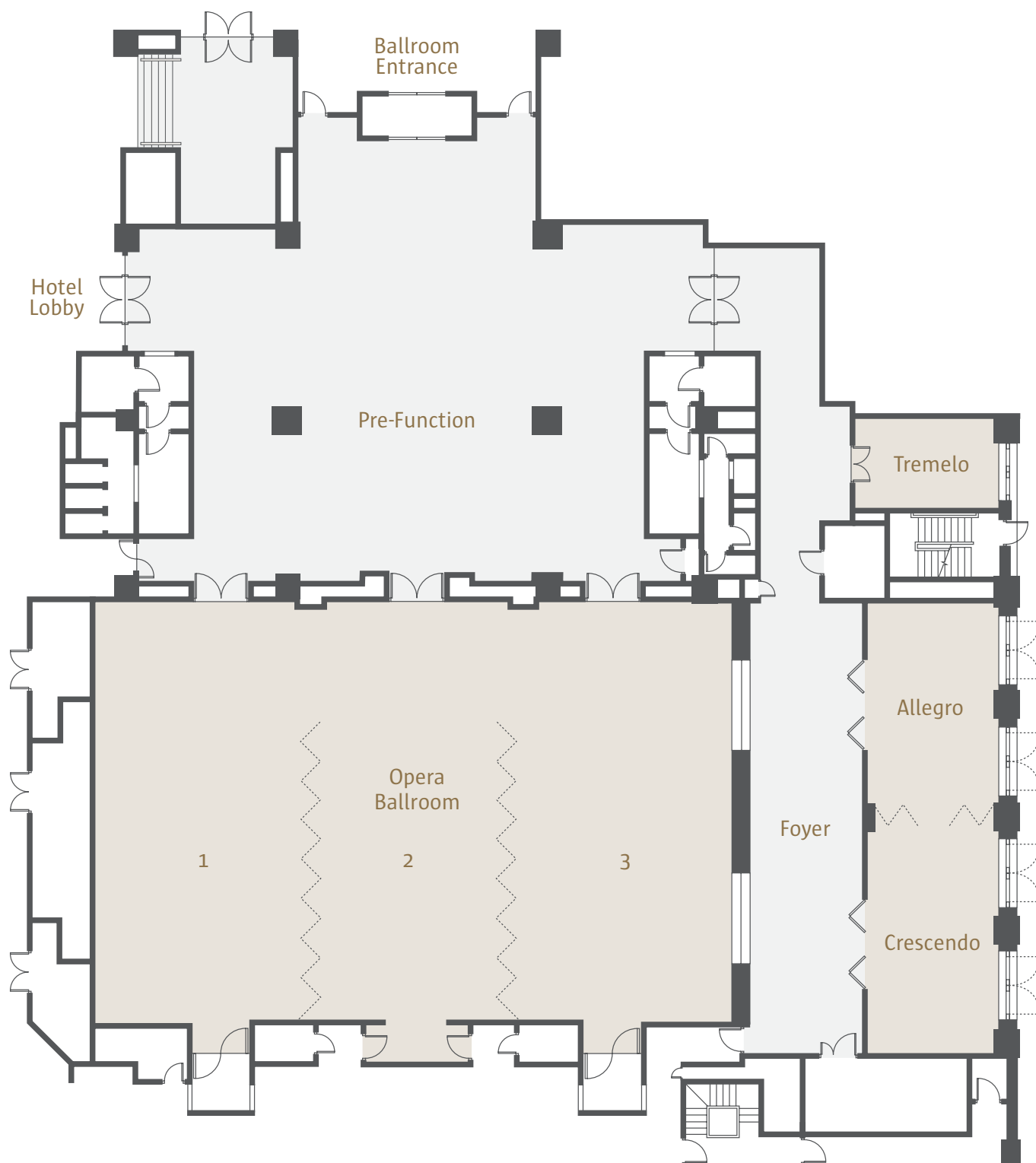
- **Location:** 4th floor
- **Cuisine:** Indian casual dining
- **Timing:** Daily 6pm till late
- **Dress code:** Smart casual



MEETINGS & EVENTS

THE TAJ DUBAI MAKES IT EASY FOR YOU TO PLAY THE PERFECT HOST, WHATEVER THE OCCASION. WHETHER THAT'S A SPECIAL CELEBRATION IN OUR STUNNING BALLROOM, OR CONDUCTING A PRIVATE MEETING IN THE BOARDROOM.

- The Opera Ballroom: 465m², 300 guests in dinner style or 400 guests in theatre style
- Tremelo Meeting Room: 20m²
- Allegro Meeting Room 2: 55m²
- Crescendo Meeting Room 2: 60m²
- Pre-function Foyer Area: 360m²
- Outdoor Pool Deck for cocktails and parties: 100 to 300 guests



TAJ CLUB LOUNGE

With its large outdoor terrace and elegant seating areas, the Taj Club Lounge continues the high-end residential style found throughout Taj Dubai. Exclusively for guests staying in our Taj Club Rooms and any of our Suites, the privacy of the Taj Club Lounge makes it ideally suited for hosting work related meetings – either in the lounge or the Taj Club boardroom.

Check in, use the computers, or host clients in style. Then sit back, enjoy a drink and nibble on a tempting selection of canapés and refreshments in the secluded lounge, with its refined colour palette of neutral tones accented with bronze, ebony and gold.

- **Location:** 24th floor
- **Timing:** Daily 7am to 11pm
- **Cuisine:** International

THE CHAMBERS

This exclusive, members-only club is designed specifically to suit the needs of today's elite business traveller. Membership to The Chambers is by invitation only, and entitles guests to the Taj Inner Circle Gold Card. This comes with a range of benefits.

Once welcomed into the club, guests will find themselves in a world apart. Host intimate meetings in the lounge, where classic modern seating is set against a backdrop of wood panelled walls lined with softly-illuminated bookcases and original artworks, creating an atmosphere of traditional luxury.

- **Location:** 24th floor
- **Timing:** Daily 7am to 11pm
- **Cuisine:** International

			CAPACITY							GENERAL COMMENTS
EVENT ROOM	SIZE	LOCATION	DINNER ROUNDS	THEATRE	U-SHAPE	CLASSROOM	BOARDROOM	CABARET	COCKTAILS	
OPERA BALLROOM	465m ²	Ground	300	440	90	216	100	230	400	Divisible into 3 separate saloons Ceiling mounted LCD projectors Motorized drop-down screens 13 rigging points around periphery
TREMELO BOARDROOM	20m ²	Ground	-	-	-	-	10	-	-	Daylight Fixed boardroom table 65" LED TV (wall-mounted)
ALLEGRO MEETING ROOM	55m ²	Ground	30	42	21	24	18	24	20	Daylight 65" LED TV (wall-mounted)
CRESCENDO MEETING ROOM	60m ²	Ground	30	42	21	24	18	24	20	Daylight 65" LED TV (wall-mounted)
PRE-FUNCTION AREA	360m ²	Ground	-	-	-	-	-	-	200	Daylight
OUTDOOR POOL DECK	550m ²	Podium Level 1	-	-	-	-	-	-	100 - 300	Burj Khalifa view

JIVA SPA & FITNESS CENTRE

INDULGE BODY AND MIND IN THE TRANQUIL ATMOSPHERE OF THE JIVA SPA.

Its peaceful look and feel brings together natural fabrics with warm, calming tones, complemented by stone flooring embellished with lotus flower motifs. The day spa includes a relaxation room, consultation room, and four treatment rooms that each have individual dressing and shower facilities. The couples' treatment room features a double deep soaking bath and double shower.

AN ANCIENT PHILOSOPHY OF WELLNESS

The ethos of our treatments is carefully drawn from the rich wellness heritage of India, the fabled lifestyle and culture of Indian royalty and healing therapies that embrace Indian spirituality. At their heart is 'Jiva', meaning 'life force' – reflecting our belief that a spa can help unfold a holistic path to open channels to nurture the vital energy at the core of our being.

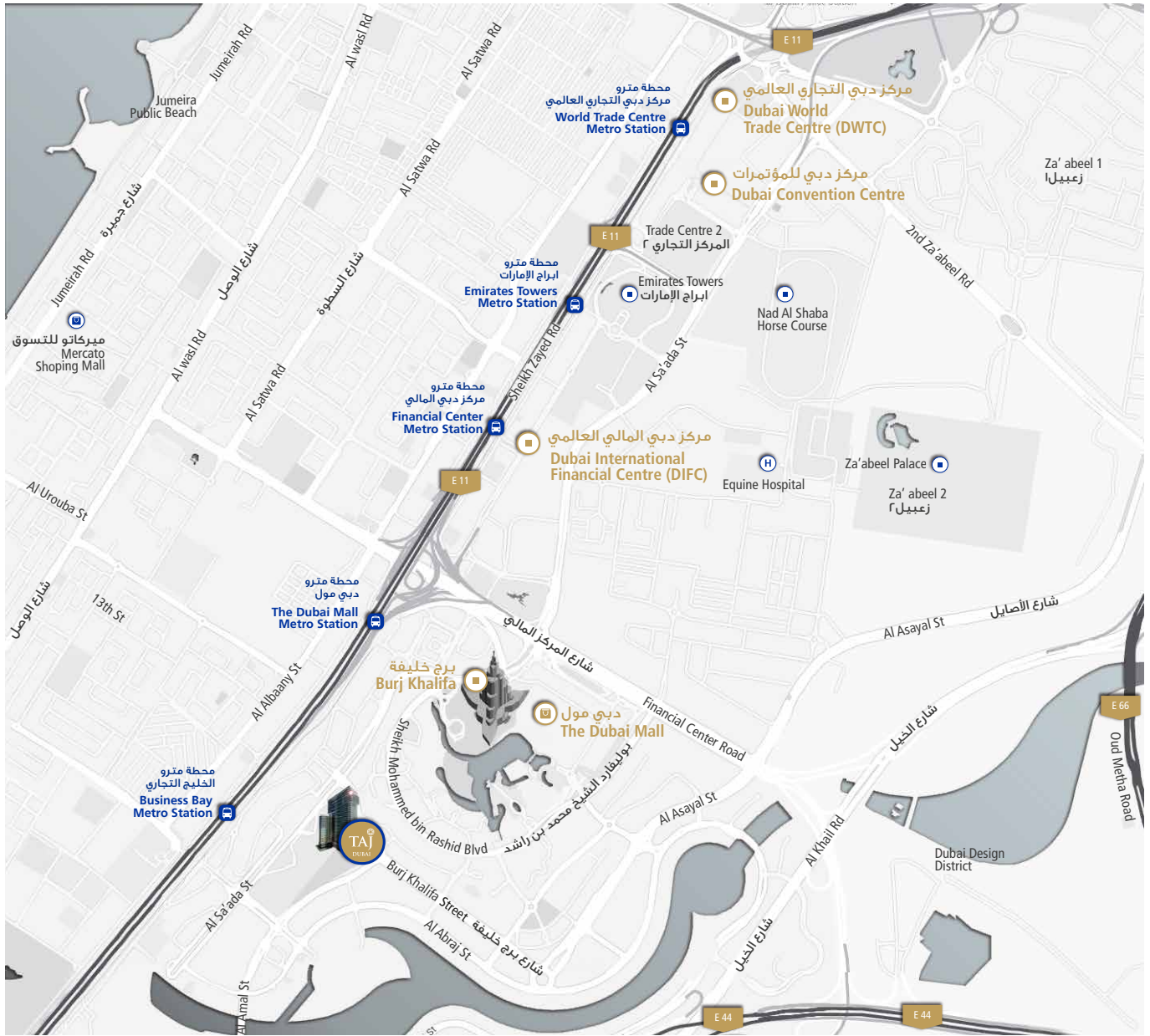
The Jiva Spa experiences are offered by trained experts, using exclusive natural products. With Jiva Spa, you take the journey within, through an array of enlivening holistic treatments and meaningful rituals for a truly tranquil experience.



FITNESS CENTRE

Our Fitness Centre is located on the Pool Deck on the 3rd floor. It includes a gym, complete with Life Fitness and TRX machines for personal fitness and training, swimming pool and changing rooms featuring a steam sauna, showers and lockers. Chic timber and warm stone walls create a serene atmosphere that links the Fitness Centre with the Jiva Spa above, connected via a staircase.





TRANSPORTATION

- From the Business Bay Metro station – ten minutes on foot
- From Dubai Mall – three minutes by car
- From Dubai International Airport – twenty five minutes by car

Burj Khalifa Street, Dubai, UAE,
PO Box 8489, Tel: +971 4 438 3100, Fax: +971 4 438 320

TOLL FREE NUMBERS

United Arab Emirates: 800 035 702 467
India: 1 800 111 TAJ (1 800 111 825)
Rest of the World: 00 800 1 LUV 1 TAJ (00 800 4 588 1 825)

sales.tthdxb@tajhotels.com, www.tajhotels.com