

THE SURF HOTEL- BENTOTA www.thesurfhotel.lk



Home

At The Surf Hotel-Bentota, you are assured of a Sri Lankan tropical beach experience. Located on a kilometer stretch of soft sand, renowned as 'the longest stretch of beach' on the south west coast of Sri Lanka, and edged by the Indian Ocean, The Surf Hotel-Bentota is a well-appointed low-rise hotel, where good service and comfortable amenities combine to create a memorable holiday and stay.

About

Located in Bentota, Sri Lanka, (64 km from the capital city, Colombo) the hotel hosts 100 well-appointed rooms, each overlooking the Indian Ocean. Set before a stretch of beach, The Surf-Bentota brings together golden sunsets, soft sand and a sprawling lawn with good accommodation and food.

Special requirements

If you have special needs, including food requirements, please contact us prior to your visit and we shall be happy to assist you. We also cater for differently-abled guests.

Getting there

Distance from Bandaranaike International Airport: 106 km via Colombo

Distance from Mattala Rajapaksa International Airport: 204 km

By car: take the coastal route along Galle Road (1 hour 30 minutes' drive) or the Southern Expressway (turn-off at Welipanna), a 45 minute drive,

By train: the Bentota train station is opposite the hotel, walking distance away.



Hotel information

Contact details : Direct to the hotel
Phone : +94 34 22 75 126/7
Fax : +94 34 2275 486
E-mail : gre@surf-bentota.net
Address : No. 40, Beach Road, Pitaramba, 80500 Bentota, Sri Lanka.

Rooms

Superior (69)

The Surf- Bentota has 64 air-conditioned superior rooms (22 ground level opening on to the lawn and 47 with private balcony), each facing the Indian Ocean.

Room facilities include: Twin/Kingsize beds, In-room safe, Mini bar, Mini fridge, Flat screen TV (satellite TV), internet (Wi-Fi), en-suite bathroom, dimming lights.



Deluxe (26)

There are 26 air-conditioned deluxerooms at the Surf – Bentota, including 13 rooms located on the ground floor, opening up to the pool.

Room facilities include: King size beds, In-room safe, Mini bar, Mini fridge, Flat screen TV (satellite TV), internet (Wi-Fi), En-suite bathroom, Dimming lights, comfy chairs and Additional bathroom amenities

In all categories -Tea coffee making facility/ 2 bottles drinking water replaced every day



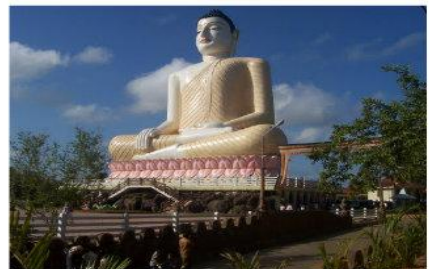
Suites (3)



Whether you're seeking a romantic getaway or a fun-filled family adventure, the Surf Hotel's Suites will make your beach vacation unforgettable. Either a Room with A Jacuzzi in the balcony, or a two roomed suite inclusive of a living room set by the poolside to choose from, Why settle for an ordinary hotel room, when you can enjoy the added value and conveniences of the finest suites

Places of interest and Excursion from Bentota attractions,

Discover sports, culture and nature during your stay at The Surf in Bentota. Located centrally with quick access to varied sites of interest in the south west of Sri Lanka, we offer guidance and direction to tourists interested in setting out to explore and enjoy.



Water Sports

The Surf offers its guests with great opportunities to get wet in action: jet skiing, water skiing, balloon boating and canoeing in the river as well as diving, surfing, parasailing and snorkeling in the sea! Boat trips along the river and along the mangroves are also available for those seeking to discover nature in exploring the environment. PADI courses are available for dive enthusiasts.

Maduganga River Safari – Balapitiya (Distance – 12 Kilometers)

Considered one of the last remaining mangrove forests in Sri Lanka, the Maduganga River Safari offers nature lovers a cruise through a host of islands along a scenic river.

Buddhist Temple, Kande Viharaya (Distance – 2 Kilometers)

An important link to Buddhist history and activities, the Kande Viharaya temple continues to be a religious and cultural place of worship. Devotees are known to dress in white as they enter the temple grounds each day. With a long history dating back to 1734, it is a place to visit and worship, not only for religious followers, but for anyone who wants to witness Sri Lankan history as well.

Turtle Hatchery Project – Kosgoda - (Distance – 08 Kilometers)

The Turtle Conservation Project is a great place to see turtles in their natural habitat, and if you're lucky, you might even see those laying eggs in the evening hours. The only place where turtles are not held in captivity, you can see turtles behaving naturally and be fascinated by the way, the different species live.

Galapatha Buddhist Temple (Distance – 3 Kilometers)

Galapatha Raja Maha Vihare Buddhist temple is a very old Buddhist temple (12th century) in Bentota with stone inscriptions, and stone carvings.

River Bentara at Bentota

River Bentara, the legendary river at **Bentota** flows into the Indian Ocean forming a lagoon at the last section of the river. River Bentara set up the widest array of water sports among all the beach resorts of Sri Lanka.

Brief Garden – Bentota (Distance - 6 Kilometers)

Laid out on five acres of land, this is the garden of well-known Sri Lankan artist Bevis Bawa, who also happens to be the elder brother of architect Geoffrey Bawa. Brief Garden, noted for its vegetation, contains a variety of tropical trees, plants and sculptures. A must-see for the nature lover, the gardens provide both nice sights as well as inspiration.

Fish Market – Beruwala (Distance – 3 Kilometers)

If you've ever wanted to know how a real fish market operates, this is the place to find out! See how the catch from the night is auctioned off the following morning. Visitors and customers can witness all the hype between 5.30am and 8.00am daily, except on Poya days.

Lunuganga – Bentota (Distance - 7 Kilometers)

A must-see when in the area, the gardens designed by famed architect Geoffrey Bawa are known for its lush greenery and scenic paths. Lunuganga, with its rare flora will be a memorable visit for all nature lovers, and is open to visitors from 9am to 5pm daily. If you wish to take a guided tour, you can do so as well.

Galle Tour Historical Dutch Fort (Distance - 54 Kilometers)

Galle is a world heritage site. It was the chief port of Ceylon/Sri Lanka. The tour to Galle should include a visit to the Galle Fort (spread across 90 acres), which was originally built by the Portuguese and later extended by the Dutch in 1663. In addition to the fort, Galle is also well known for its hand-made lace. A World Heritage Site, it hosts many small streets, cafes, several Churches and Museums to delight the inquisitive traveler.



Monday market (Distance - 01 Kilometers)

On Mondays the busy town of Aluthgama which is just across the bridge from Bentota transforms into a bustling market centered on the Matugama Road. There is a large vegetable and fruit market and many other items can be purchased at very cheap prices.

Beruwela lighthouse (Distance - 03 Kilometers)

The Beruwela Lighthouse is located on an island. When you approach Beruwela, in the distance you can see the island and a small white steeple jutting through the trees. That is the lighthouse tower. Boat trips can be taken to the lighthouse.

Local Crafts

Visit the Batik Factory and the Ariyapala Mask Museum in Ambalangoda to see the craftsmanship of locals and take a pick from Sri Lankan Handicrafts. An opportunity to buy a memento of your trip to tropical Sri Lanka: batik paintings or clothing, wooden masks, wicker baskets or your own little devil dancer.

Moonstone Mines

Take a quick trip to the Moonstone Mines at Meetiyaogoda in Ambalangoda. Sri Lanka has been renowned for its gems for over thousands of years, and the mines in Meetiyaogoda has for many generations produced high quality and charming moonstones.

How to get to tourist attractions:

Roads to places of interest are well developed. The newly developed Southern Expressway allows faster access to main towns. If you are interested in travelling by train, the Bentota train station is just a walking distance away from The Surf.

FACILITIES

FOOD & BEVERAGE



Main restaurant – ‘L’héritage’

The Surf's main restaurant L'héritage offers breakfast, lunch and dinner with a choice between international buffet and an à la carte menu. Indoor dining and outdoor 'Al fresco' style dining is available for an intimate meal.

Breakfast 0730hrs – 1000hrs
Lunch 1230hrs – 1430hrs
Dinner 1930hrs – 2200hrs

Seafood restaurant and bar – ‘Fruits de la MÉR’

Set by the poolside, fresh catch from the sea is prepared to your preference: spicy, mild, salty or sour. Wine, beer or spirits can be enjoyed on 'Lagoon seats' on the Surf's own private beach located by the restaurant.

Opening times: 07.00hrs– 10.00hrs 1930 -2200hrs

Café – ‘Der Café’

À-la-carte food including specialty coffees, snacks and meals are served both indoors (air conditioned) and outdoors by the pool.

Opening times: 24 hours

Bar – ‘Comfy Bar’

Serving both local and foreign spirits, beers and wines, designed with comfort in mind this bar has varied corners for relaxation and group discussions.

Opening times: 10am –12.00pm
Open for the public

ENTERTAINMENT



Chill out Lounge

With its suede sofas, beanbags and theme nights, this enclosed cozy corner caters to music lovers, karaoke singers and movie buffs.

Opening times: 8.00 pm – 1.00 am
Hotel guests only

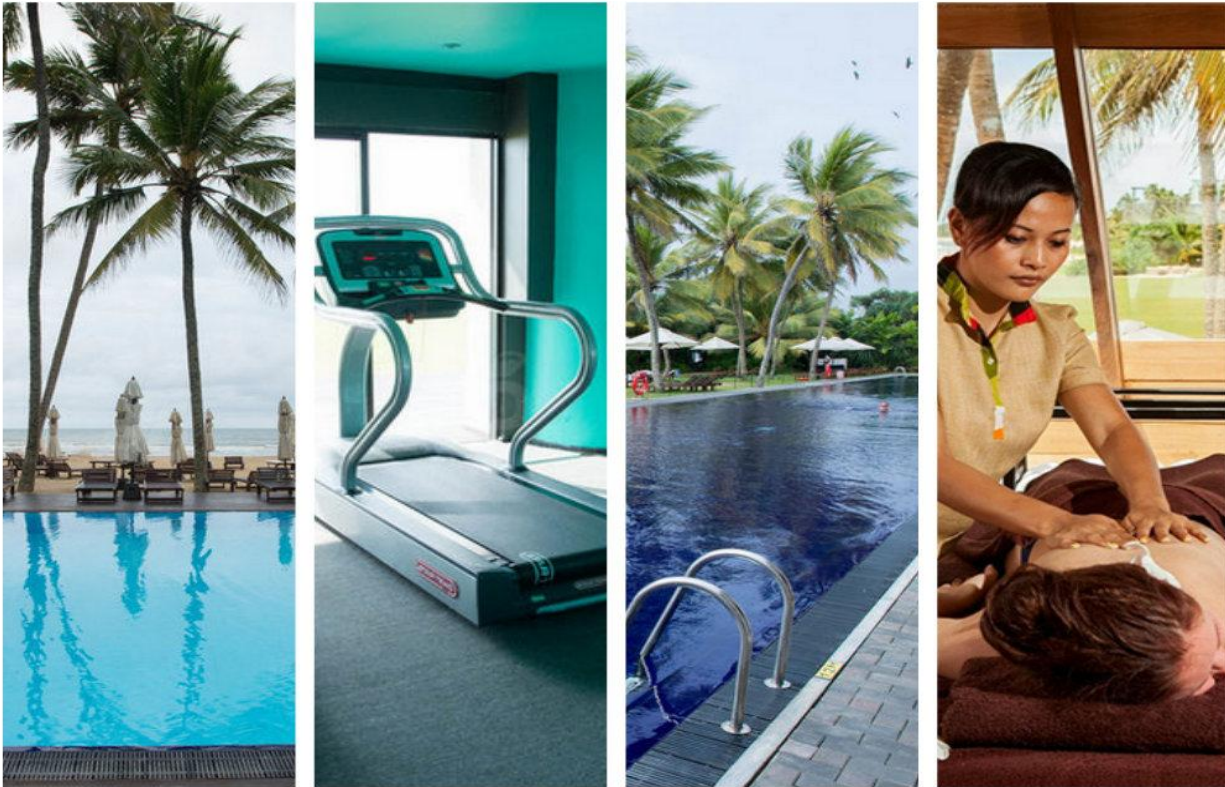
The Arabian Corner

At the Surf's own Shisha (Hookah) lounge, set on the sand by the pool, you can gaze at the stars at night, enjoying the soft sea breeze while tasting varied flavours.

Opening times: 7.00 pm – 1.00 am
Hotel guests only



WELLBEING



Nirogi Spa

Services: professional therapists from Bali offer Beauty Therapy, Body Treatments and Therapies including deep tissue massage, aromatherapy, Balinese massage, reflexology, Shiatsu and pregnancy massage.

Facilities :single and double massage rooms, outdoor showers, relaxation area with Jacuzzi and a mezzanine treatment room with balcony with a view of the ocean and the Surf.

Spa Packages: varied packages including gift packages are available for him, her or both.

Opening times: 7am – 7pm

Viyayama Gym

Fitted with brand new cardio, weightlifting and full body workout machines and equipment, the gym is managed by a qualified personal trainer who will work with you to meet your requirements.

Opening times: 7am – 7pm.

Hotel guests only

Swimming Pools

The surf has 2 swimming pools set between the beach and the hotel, surrounded by wooden decks, ideal for relaxation and tanning.

Cool: 170 feet in length, 4 feet in depth with an accompanying baby pool.

Gamburu : starting at a depth of 3 feet it reaches a depth of 9.8 feet

Other Facilities

24 hour Reception, guest relation unit, 24 hour Room Service, 24 hour Security, taxi hire, Concierge Services, Laundry, Currency Exchange, Valet Parking. Life-guard station for the beach is located next door to the hotel.



Conference Hall Capacity	<ul style="list-style-type: none"> • Theatre Style 50 pax • Class Room Style 32 pax • Board Room Style 15 pax • U Shaped Style 13 pax • Cluster Style 32 pax
Conference Hall Charge (Per Day Rental)	<p>Hall Charge (Full Day) 6000 Hall Charge(Half Day) 5000</p> <p>Multimedia projector, Sounds, Screen, Microphone, etc</p> <ul style="list-style-type: none"> - Full day 16000 - Half day 12000 - Per hour rate 5000 - <p>Conference facilities include..</p>
Conference Snack Rates (per person)	<ul style="list-style-type: none"> • Morning Break (2 savory ,1 sweet, ea/coffee) 400 • Evening Break (2 sweets ,1 savory, tea/coffee) 400 • Morning + Evening Break 750 • 1 break with lunch 3200 • 2 breaks with lunch 2800
Cocktail Charges (Per hour per person)	<ul style="list-style-type: none"> • Imported liquor 5000 • Local liquor 3500 <p>Above rate includes 2 variety of hot canapés and 1 variety of cold canapés</p> <p>Above rate includes Calypso, 3 piece band or DJ entertainment</p>
Corkage Charges (Per bottle)	<ul style="list-style-type: none"> - Imported liquor/wine 1500 - Local liquor 1000 - Beer 350
Beverage Charge from the hotel (per bottle)	<ul style="list-style-type: none"> - Lion Larger beer 400 - Soft Drinks 170 (Excludes diet coke) - Bottled Water (1000ml) 150
Bites (Per Kg)	<p>The below can be prepared either devilled or fried as per guests' choice.</p> <ul style="list-style-type: none"> • Sausages (Chicken/Beef/ Pork) 1500 • Chicken/Beef/ Fish 2200 • Cuttlefish/ prawn 2500 • French Fries 1200
Gala Dinner Supplement (per person)	<p>For BB and HB guests 2600 For FB guests 3700</p>



Ceylon Hotels Corporation



.....
OMER IDROOS
DIRECTOR SALES

No 56 Galle Road Colombo 03
Hot Line Land: (+9411) 5 585858, Fax: (+9411) 5545882
E-mail: reservations@ceylonhotels.net
Web: www.chcresorts.com

