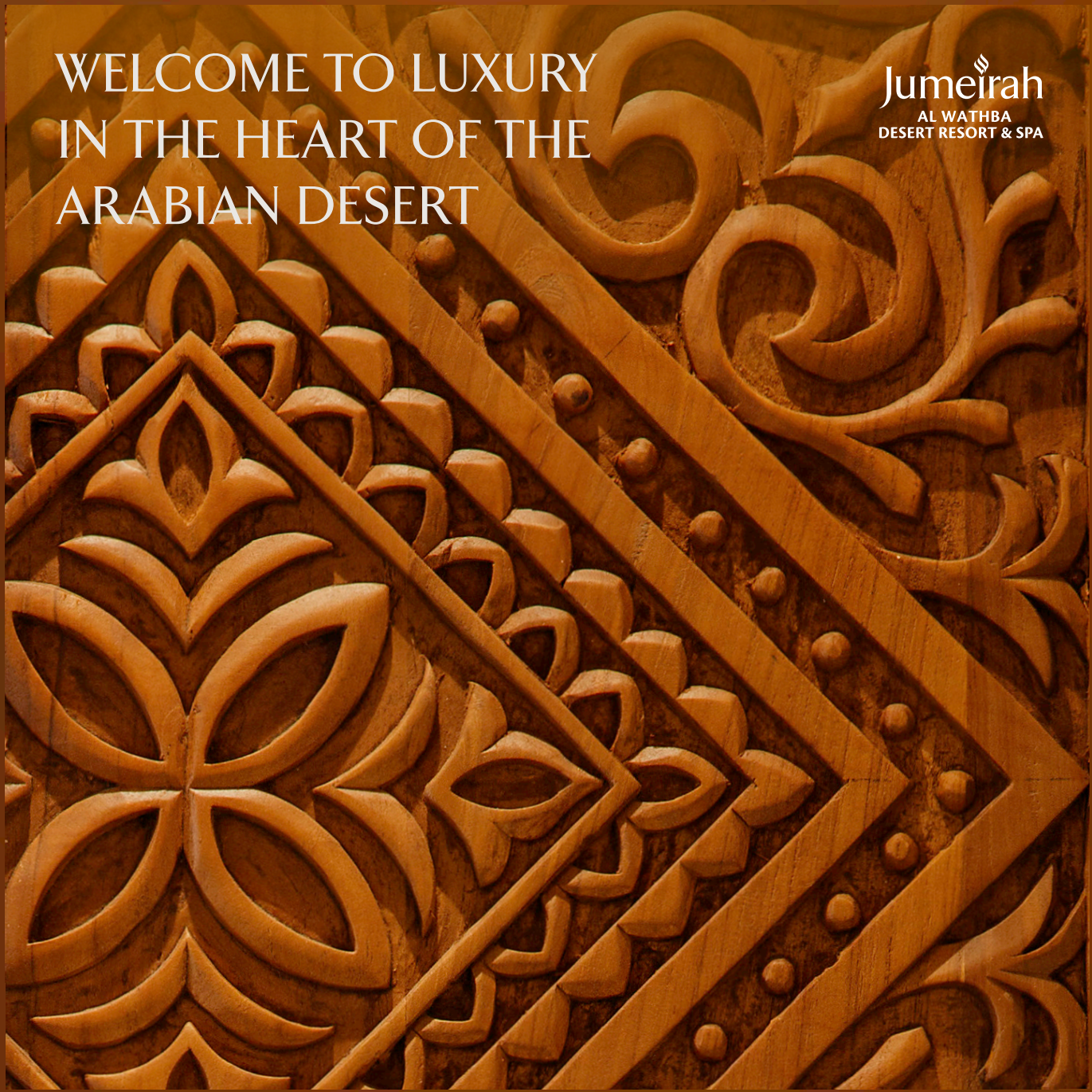


WELCOME TO LUXURY
IN THE HEART OF THE
ARABIAN DESERT

Jumeirah
AL WATHBA
DESERT RESORT & SPA



Jumeirah Al Wathba Desert Resort & Spa



AN INDULGENT DESERT SANCTUARY

Discover the true splendour of Arabia surrounded by sublime comfort at Jumeirah Al Wathba Desert Resort & Spa. Set deep within the desert landscape, this luxurious resort is located 50 kilometres to the south east of Abu Dhabi, in an area where natural beauty abounds. Designed to evoke the atmosphere of a traditional Bedouin village, a soothing sense of understated elegance pervades and the accommodation is enriched with timeless local detail.

At the heart of the resort is a central square, bordered by restaurants, bars, and retail outlets. Choose from poolside dining, Italian cuisine, international buffets, or rooftop sundowners overlooking the dunes. Mesmerising panoramic views and effortless style make Jumeirah Al Wathba an authentic Arabian desert experience to remember. Welcome to a world away from it all, a unique environment with the space to reconnect and the freedom to lose yourself.

OPEN YOUR DOOR TO THE WONDERS OF NATURE



LOCATION - The resort is set in Abu Dhabi's Al Wathba district, around 45 minutes from Abu Dhabi International Airport, and 1 hour 30 minutes from Dubai International Airport and the iconic Burj Al Arab Jumeirah. Plus, you are only 45 minutes away from Abu Dhabi's main tourist attractions, making it easy to explore everything else the city has to offer.

Arabian Deluxe King Room

TRADITIONAL ARCHITECTURE MEETS MODERN ELEGANCE

80 guest rooms, 10 suites, and 13 villas, inspired by traditional tents, offer a chic setting to relax in this rustic desert environment. The refined interiors incorporate traditionally inspired artwork and Arabesque accessories, alongside the latest technological features for contemporary ease. Spacious suites are perfect for families and the exclusive villas, with their own private pool and terrace, present an unparalleled choice for larger groups or anyone in search of the ultimate luxury getaway.

ROOMS AND SUITES

Category	Size (sq.m)	No
Arabian Deluxe Room	45	55
Arabian Twin Room	45	24
One Bedroom Suite	95	6
Two Bedroom Suite	150	4

VILLAS

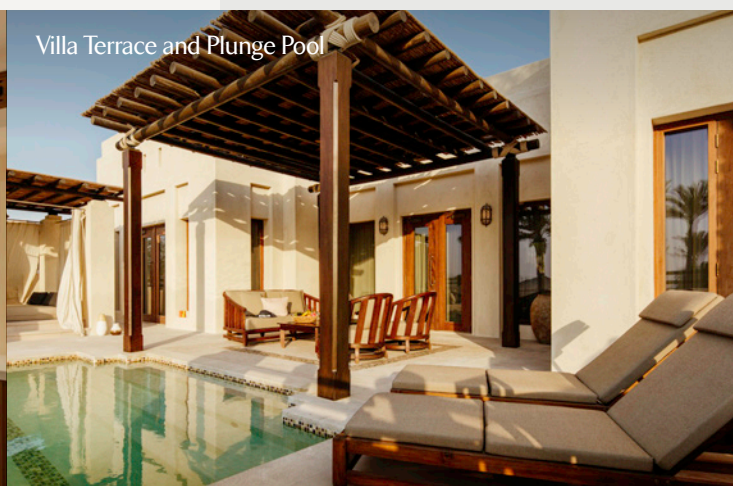
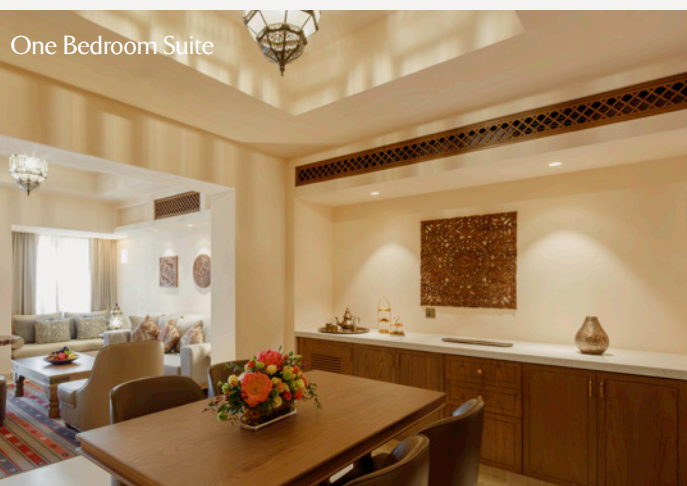
Category	Size (sq.m)	No
One Bedroom Villa	125	6
Two Bedroom Villa	230	6
Royal Three Bedroom Villa	360	1

IN-ROOM FACILITIES

- ❖ Balconies in all rooms
- ❖ Complimentary access to spa facilities
- ❖ Complimentary internet access
- ❖ In-room tea and coffee-making facilities
- ❖ Satellite television
- ❖ 24-hour in-room dining
- ❖ Bathroom with individual rain showers and baths
- ❖ iPod docking stations
- ❖ Private dining room in all suites

VILLA FACILITIES

- ❖ Private plunge pools
- ❖ Panoramic views of the Arabian desert
- ❖ 24-hour check-in
- ❖ 24-hour in-room dining
- ❖ Ensuite bathrooms for all bedrooms
- ❖ 24-hour personalised service
- ❖ Fully-equipped kitchen
- ❖ Complimentary transfers to and from Abu Dhabi International Airport





DINE BESIDE THE MAGICAL DUNES

Jumeirah Al Wathba features five main restaurants and bars combining local and international influences. Or, for an all-encompassing Bedouin experience, travel by buggy to the heart and soul of the resort, Al Mabeet Desert Camp, where you can unwind and dine amongst majestic sand dunes. This unforgettable locale combines the spirit of nomadic life with impeccable hospitality and the sounds of live entertainment, inspired by Emirati traditions.

Restaurants and bars:

Bait Al Hanine | This bright and stylish all-day dining restaurant extends inside and out, offering an inviting destination to eat together at the centre of the resort.

Terra Secca | Savour signature Italian cuisine in this sophisticated Trattoria, with exceptional food, impeccable service, and enchanting desert views.

Panache | Surround yourself with crystal waters at this idyllic restaurant and pool bar, combining Arabic favourites, healthy dishes, and fashionable drinks.

Hayaakom | Step into a home away from home at our intimate lobby lounge, a welcoming space serving light fare, Arabic inspired mocktails, and fresh coffee.

Al Mesayan | Recline above the sand in our extraordinary rooftop bar where you will be mesmerised by the serenity of the surrounding desert.

Al Mabeet Desert Camp | A contemporary homage to Bedouin culture and an unparalleled space to unwind and dine amongst the dunes.

AWE-INSPIRING MEETINGS AND EVENTS

Delight your guests with a dazzling desert backdrop in one of the resort's versatile event venues, a world apart from the pace of city life. This unique destination is the perfect place to impress business associates and reward colleagues with an unforgettable team building experience. When it comes to hosting an exquisite social celebration, Jumeirah Al Wathba promises a truly magical affair. Say "I do" amongst the rolling dunes, mark your special occasion in signature Jumeirah style or introduce loved ones to a lavish interpretation of nomadic life. A team of expert event planners will be there every step of the way to turn your dreams into a reality.



Ballroom

UNWIND AT YOUR LEISURE

Pool and kids' club - Relax and let the natural tranquillity and soothing energy restore your equilibrium. Stretching out to the undulating desert, the stunning 1,000 sqm crystal water pool is flanked by meandering waterways, verdant palm trees, expansive day beds, and sumptuous cabanas. If you're looking for some retail therapy, enjoy a leisurely stroll around the pool's surrounding souk area, with charming shops that resemble a traditional market encircling an oasis, selling a range of souvenirs and modern pieces. Younger guests will enjoy hours of fun at Sinbad's Kids Club with its private children's pool, outdoor playground, and an array of indoor entertainment, whilst teenagers get to chill out in their own dedicated space.



Panache and the pool

AN EXQUISITE SPA JOURNEY AT TALISE SPA



Talise Spa

Spa | At Talise Spa, you will discover a rejuvenating oasis to luxuriate and escape. 13 treatment rooms, including two couples rooms, are built around a picturesque garden area, allowing you to relax and reflect, lulled by the sounds of trickling water and resident wildlife. Along with relaxation areas, a sauna, steam rooms, plunge pools, snow cave, and a traditional Turkish hammam, this decadent spa also features salt rooms and a unique cryo experience, both exclusive to Jumeirah Al Wathba.

Talise Boutique | The Talise Boutique gives guests a chance to take home all the professional spa products used to create unique experiences at Talise Spa. The boutique also offers a wide range of spa amenities such as candles, music and spa accessories.

Facilities

- ❖ Two Turkish hammams
- ❖ Four plunge pools
- ❖ Two Jacuzzis
- ❖ Two steam rooms
- ❖ Two saunas
- ❖ Two snow rooms
- ❖ Two crystal salt sauna
- ❖ Two ice bucket showers
- ❖ Private ladies and gents
- ❖ Fully-equipped Talise fitness centre



Jumeirah Al Wathba Desert Resort & Spa

Tel: +971 2 204 4444

Fax: +971 2 204 4400

Abu Dhabi, UAE

P.O. Box - 56620

E-mail: JAWinfo@jumeirah.com

- ① Al Wathba Wetland Reserve
- ② Al Wathba Cycle Track
- ③ Camel Race Track
- ④ Al Wathba Fossil Dunes
- ⑤ Sheikh Zayed Grand Mosque
- ⑥ Louvre Abu Dhabi

- ⓪ Jumeirah at Etihad Towers
- ⓫ Jumeirah Saadiyat Island Resort

LOCAL ATTRACTIONS

Al Wathba is a popular destination for nature enthusiasts and sports lovers. Discover Al Wathba Wetland Reserve, an internationally recognised wetland area and the first in the emirate, featuring an intricate display of natural and man-made water bodies. A colourful variety of birds, aquatic life, and plants make their home there, including some endangered species. Walk one of the designated trails or hike around the nearby fossil dunes to see the impressive sand fossils carved by the elements. Al Wathba cycling track weaves a scenic route through some of the nearby dunes and makes a particularly enchanting sight at sunrise or sunset and you can watch one of the most popular local traditions up close at Al Wathba Camel Race Track.

Take a trip into the capital and explore the many leisure and entertainment attractions, including the historic Sheikh Zayed Grand Mosque, Saadiyat Island's Cultural District, and Yas Island, where you will find Yas Marina Circuit, Ferrari World theme park, and Yas Waterworld.

Jumeirah Hotels, Resorts and Residences

MIDDLE EAST

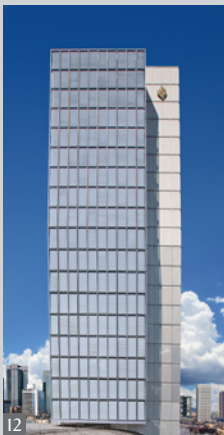
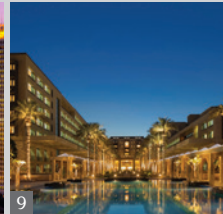
1. Jumeirah at Etihad Towers, Abu Dhabi
2. Burj Al Arab Jumeirah, Dubai
3. Jumeirah Beach Hotel, Dubai
4. Jumeirah Creekside Hotel, Dubai
5. Jumeirah Emirates Towers, Dubai
6. Madinat Jumeirah, Dubai
7. Jumeirah Zabeel Saray, Dubai
8. Jumeirah Living World Trade Centre Residence, Dubai
9. Jumeirah Messilah Beach Hotel & Spa, Kuwait

ASIA PACIFIC

10. Jumeirah Vittaveli, Maldives
11. Jumeirah Himalayas Hotel, Shanghai

EUROPE

12. Jumeirah Frankfurt, Germany
13. Jumeirah Carlton Tower, London
14. Jumeirah Lowndes Hotel, London
15. Grosvenor House Suites by Jumeirah Living, London
16. Jumeirah Port Soller Hotel & Spa, Mallorca



Jumeirah Group Global Sales Offices

MIDDLE EAST

Middle East
Tel: +971 4 364 7777
Email: mesales@jumeirah.com

EUROPE

Western Europe
Tel: +44 20 7858 7555
Email: uksales@jumeirah.com

Central Europe
Tel: +49 69 297 237 610
Email: germanysales@jumeirah.com

Russia & CIS
Tel: +7 495 641 18 36
Email: moscow-sales@jumeirah.com

AMERICAS

Western Region, USA
Tel: +1 480 951 4408
Email: americassales@jumeirah.com

Central Region, USA
Tel: +1 949 387 2055
Email: americassales@jumeirah.com

Eastern Region, USA
Tel: +1 212 237 2640
Email: americassales@jumeirah.com

Argentina
Tel: +54 11 4372 6190
Email: phc@personalhotel.net

Brazil
Tel: +55 11 3085 5078
Email: info@hiphotels.com.br

Canada
Tel: +1 416 935 1896
Email: jumeirah@voxtm.ca

ASIA PACIFIC

India
Tel: +91 22 619 69700
Email: indiasales@jumeirah.com

China
Tel: +86 21 3858 0129
Email: chinasales@jumeirah.com

Australia
Tel: +61 (0) 409 616046
Email: teree.george@jumeirah.com

Jumeirah Reservations

Jumeirah Hotels & Resorts
Book online: jumeirah.com
Tel: +971 4 364 7555
Email: reservations@jumeirah.com
GDS helpdesk:
helpdesk@jumeirah.com

Jumeirah Living Serviced Residences
Book online: jumeirahliving.com
Tel: +971 4 364 7676
Fax: +971 4 364 7677
Email:
reservations@jumeirahliving.com
sales@jumeirahliving.com

Toll free:

From Americas:

Argentina	0800 6662 105
Brazil	0800 8919 650
Canada	1 888 387 8357
Mexico	01 800 925 0323
USA	1 877 854 8051

From Asia Pacific:

Australia	1 800 269 388
China	400 8866 087
Hong Kong	800 933 730
India	000 800 440 2144
Japan	012 0081 700
Malaysia	1 800 812 577
New Zealand	0800 450 383
Pakistan	00800 9097 1011
South Korea	080 525 0880
Singapore	800 1011 759

From Europe:

Austria	0800 295 292
Belgium	0800 74147
Cyprus	800 92532
Czech Republic	800 701 483
Denmark	8088 7209
France	0800 910379
Germany	0800 1828 000
Hungary	068 098 7430
Ireland	1800 760 183
Italy	800 870 121
Luxembourg	800 25385
Netherlands	800 0223 546
Norway	800 10272
Portugal	800 819 354
Russia	8800 555 0324
Spain	900 977 050
Sweden	020 795 541

Switzerland	0800 561 196
United Kingdom	0800 0828 000

From Middle East & Africa:

UAE	800 JUMEIRAH
	800 5863 4724
Bahrain	800 00555
Egypt	0800 0000 157
Saudi Arabia	800 8971 439
South Africa	0800 999 563

Direct Dial (IDD Rates apply):

Kuwait	+971 4 364 7540
Qatar	+971 4 364 7541
Other countries	+971 4 364 7555

Jumeirah™

STAY DIFFERENT

jumeirah.com

© Jumeirah International LLC 2018

All rights reserved. No part of this publication may be reproduced in any material form (including photocopying or storage in any medium by electronic means) without the written permission of the Jumeirah group of companies.